

IMAGE SELECTION

„ALBRECHT DÜRER: DEFYING NORMS, SETTING STANDARDS”

Exhibition date: 4 December 2024 – 9 March 2025

Curator: Susanne Pollack, Graphische Sammlung ETH Zurich



Fig. 1

Albrecht Dürer
Melencolia I, 1514
engraving
240×187 mm
Inv.-Nr. D 1258

Graphische Sammlung ETH Zürich



Fig. 2

Albrecht Dürer
Adam and Eve, 1504
engraving
251 x 195 mm
Inv.Nr. D 1132

Graphische Sammlung ETH Zürich

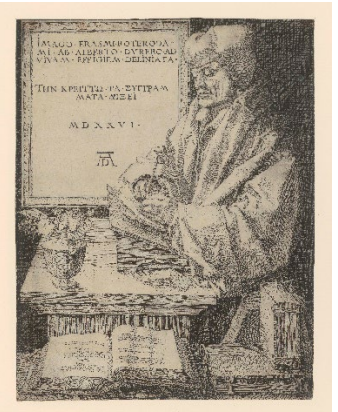


Fig. 3

Albrecht Dürer
Erasmus of Rotterdam, 1526
engraving
247 x 191 mm
Inv.Nr. D 7756

Graphische Sammlung ETH Zürich



Fig. 4

Albrecht Dürer
The Men's Bath, ca. 1498
Woodcut
385 x 280 mm
Inv.Nr. D 1263

Graphische Sammlung ETH Zürich

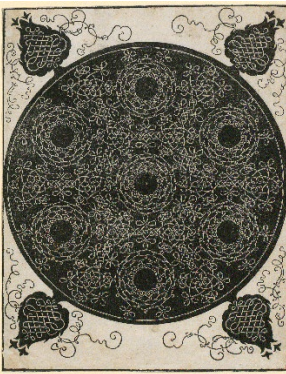


Fig. 5

Albrecht Dürer
Knots, after 1507
Woodcut
266 x 210 mm
Inv.Nr. D 7785

Graphische Sammlung ETH Zürich

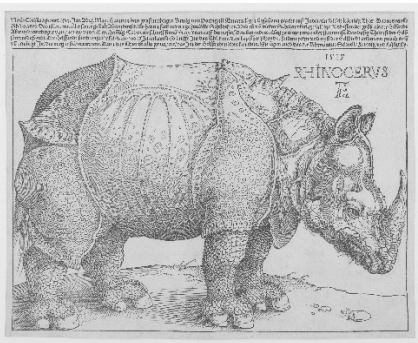


Fig. 6

Albrecht Dürer
Rhinoceros, 1515
Woodcut
243x308 mm
Inv.-Nr. D 13000

Graphische Sammlung ETH Zürich

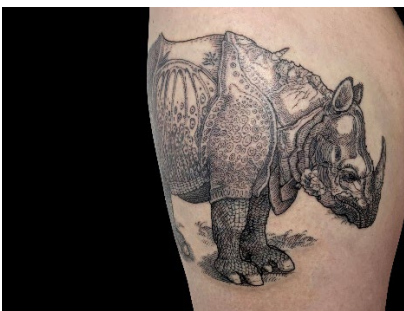


Fig. 7

Tattoo von Rooshi, Berlin (Germany), 2022
after the *Rhinoceros* of Albrecht Dürer
© Tattoo & Foto: Rooshi

The images are solely for use in connection with the exhibition **“Albrecht Dürer: Defying Norms, Setting Standards”**, 4 December 2024 – 9 March 2025

High-resolution images can be found on: <https://gs.ethz.ch/en/media/>

Login: presse (username), grsethz (password)